

## Vacuum pump

**testo 565i – smart vacuum pump  
for automated evacuations with  
integrated holding test,  
7 CFM / 198 l/min,  
10 CFM / 283 l/min**



---

Fully automated evacuation process with integrated holding test when used in combination with the testo 552i vacuum probe

---

Safe use even with flammable class A3 and A2L refrigerants

---

One app for everything: Configure measurements, monitor and manage data with the testo Smart App

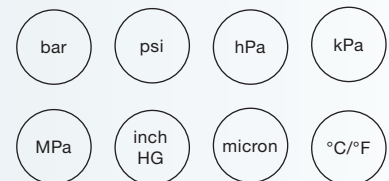
---

Easy oil change and inspection glass for quick assessment of the oil level

---

Non-return valve to prevent vacuum loss in the event of a power interruption

---



Bluetooth +  
App

testo Smart App  
for free download



The new testo 565i vacuum pump performs refrigeration system and heat pump evacuations completely automatically thanks to the connection to the testo 552i vacuum probe. When the desired vacuum target value is reached, pumping is automatically stopped and a vacuum holding test is started at the same time. Foreign gases and moisture are thus safely removed and data on the tightness of the system is stored. The data logging function ensures complete documentation. This means that evacuations can be carried out completely autonomously.

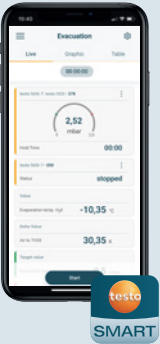
Configuration, monitoring of live values and sending the measurement report can be easily controlled via the free testo Smart App. This keeps you flexible and saves you valuable time.

For optimal workflows, the testo 565i automatically establishes a Bluetooth connection to the Testo refrigeration measuring instruments and the Smart App when it is switched on. The pump also guarantees maximum safety at all times thanks to its compatibility with A2L and A3 refrigerants.

# Technical data / order data



## Everything under control with the testo Smart App




The testo Smart App guides you quickly and easily through measurements on refrigeration, air conditioning and heating systems.

- Automatic Bluetooth connection with the testo 565i, the manifolds and Smart Probes
- Simple configuration of the evacuation
- Monitoring of all measured values and data storage
- Graphic progression display
- Creation and dispatch of the measurement report

Version	7 CFM	10 CFM
Flow rate	7 CFM / 198 l/min	10 CFM / 283 l/min
Weight	12 kg	13 kg
Ultimate vacuum	15 micron	
Refrigerant	A2L / A2 / A3 certified	
Connection sizes	1/4 SAE, 3/8 SAE, 1/2 SAE	
Bluetooth	BLE 5.0: 30 m distance	
Operating temperature	+5 to +40 °C	
Pump type	Rotary vane pump	
Number of stages	Two-stage pump	
Oil compatibility	ISO VG 46	
Order no.	0564 5652	0564 5653


## Suitable Smart Probes and manifolds



**testo 552i – App-controlled wireless vacuum probe**

- Identify vacuum quickly and easily by means of the graphical display in the App or on the digital manifold screen
- Connects automatically via Bluetooth® to the testo Smart App, the digital manifolds and the testo 565i vacuum pump


Order no. 0564 2552



**testo 570s – Digital manifold with 4-way valve block, Bluetooth and intelligent error analysis**

- Long-term measurement with intelligent error analysis in the testo Smart App
- World's longest battery life of up to 360 hours with rechargeable battery (USB-C) and batteries
- Suitable for use with A3 and A2L refrigerants


Order no. 0564 5701



**testo 557s – Smart digital manifold with Bluetooth and 4-way valve block**

- All results at a glance thanks to the large graphic display
- Exceptionally compact and reliable thanks to the easy-to-handle, robust housing with IP 54 protection class

Order no. 0564 5570



**testo 550s – Smart digital manifold with Bluetooth and 2-way valve block**

- For exceptionally fast measurements on refrigeration and air conditioning systems and heat pumps
- Large graphic display for easy evaluation of measurement results

Order no. 0564 5500

# Accessories

Accessories	Order no.
3-hose charging set	0554 2111
Vacuum hose	0554 2112
Vacuum pump oil, 330 ml	0564 1002

## Control and evaluate evacuation quickly and easily via App

The screenshots illustrate the app's workflow for evacuation control and evaluation:

- Configuration of Evacuation:** Shows settings for Start (Manual), End (Manual), Measurement cycle (1 sec), Pressure type (Absolute), Ambient pressure (1.013 hPa), and Ambient temperature (20.0 °C). A 'Stop' button is visible at the bottom.
- Start evacuation:** Shows a gauge reading 1,63 mbar and a 'Start' button.
- Auto-stop when the target value is reached:** Shows a gauge reading 0,49 mbar and a 'Stop' button.
- Automatic initiation of vacuum holding test:** Shows a gauge reading 1,24 mbar and a 'Stop' button.
- Analysis of the data:** Shows a graph with pressure and temperature data over time, with 'New' and 'Save' buttons.

1981 0944/dk/04.2024

Subject to change, including technical modifications.



Hassellunden 11A, 2765 Smørum  
 Tel. 45 95 04 10  
 info@buhl-bonsoe.dk  
 www.buhl-bonsoe.dk